

The Veterinary Lifesaving Center Capital Campaign

Building a stronger safety net for pets and people





Needed: Better Medical Facilities for Thousands of Shelter Pets Arriving with Critical Needs

"Our most critical cases come in on death's doorstep. Where other shelters might only consider euthanasia, we see possibility and hope. We're fortunate to have the ability to do everything we can, and every time I see one of those animals recover and go home with a new family... it's incredible. We could do even more with a better facility."

Dr. Jen Stonequist, DVM, DSM,
Director of Shelter Medicine



Our veterinary facilities are already outdated, overcrowded, and inadequate. Every pet that comes to KHS requires individualized care and attention, but over the last five years, the percentage of pets admitted to the shelter requiring critical medical treatment has grown from 33% to 50%.

Our current facilities are lacking in so many ways. We lack healthy ventilation systems. We lack adequate areas for crucial patient care, dental treatment, surgery, and recovery. And we need upgrades and better access to our diagnostic equipment.



More than ever, it is time to provide our community's pets in need with a veterinary facility that matches the excellence of our work and sustains our high lifesaving rate!

With an expanded, better-equipped 6,000 square-foot Veterinary Lifesaving Center, we'll have triple the space to save even more lives, accept more medically at-risk patients from other shelters, and improve animal health throughout our shelter and community.



96%

**LIFESAVING
RATE IS AMONG
THE HIGHEST IN THE
NATION**

It's also a testament to the innovative, compassionate, and individualized care each pet receives.



Needed: A Safety Net for Community Pets & Families

Too often, low-income pet owners in our community cannot afford the urgent veterinary care they need and want for their pets.

Lacking resources or assistance, families often face the painful choice of having their pet go untreated... or having to surrender their pet to KHS. **We are working to change that, but we need your help.**

Thanks to a new state law and with a new Veterinary Lifesaving Center, KHS will provide reduced-fee veterinary care to pets in qualified low-income households.

It is time for KHS to take this step to create a safety net in our community to keep pets and people together whenever possible.



To meet the needs of community pets and low-income families, as well as life-saving individualized care for more than 6,000 pets that

come into the shelter every year, we need more (and far improved) space than our current medical facilities provide.

As we develop this new clinic space and service, we will continue to work closely with our many veterinary partners to build a more humane community for all.



"As a local veterinarian, far too often, I see cases in which a family must decide between euthanasia or surrender to KHS due to financial constraints. I am looking forward to being able to offer another option— Kitsap Humane Society's low-cost clinic, which will help provide comprehensive care to better prevent emergencies from happening. All of our pets should have access to quality medical care, independent of their income status. This clinic will keep pets with their families by offering low-cost services to those who need it most."

**Dr. Nicolle Perisho,
KHS Board Member**





"Right now, there are so few resources available for low-income pet owners who find themselves in an impossibly heart wrenching situation of having to give up a beloved family member because they cannot afford the pet's medical care. I am excited to see KHS serve as a safety net for those who truly need it. This clinic makes our community stronger."

**The Honorable Sherry Appleton,
Member of the Washington House
Representatives from 2005–2021,
KHS Board Member**

The Solution: A Veterinary Lifesaving Center

Pets and People Deserve

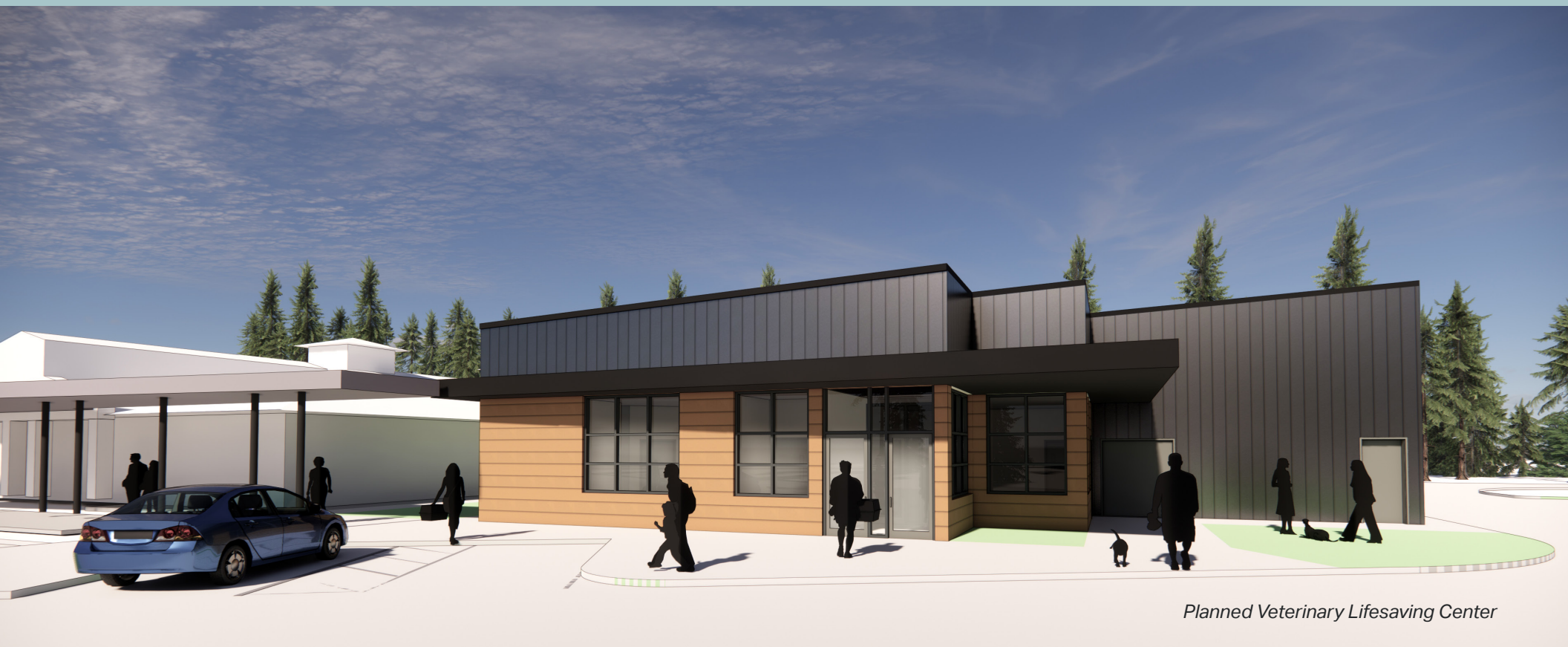
Over the last decade, Kitsap Humane Society has transformed our campus and animal welfare in Kitsap County.

The construction of the Veterinary Lifesaving Center, including the development of a community clinic is the crucial next step KHS can take to provide a full spectrum of innovative animal welfare programs and facilities.

Improvements and features of the new Veterinary Lifesaving Center will include:

- Triple the size and space of our current medical facilities
- Reduced-fee veterinary services to low-income families through a new community clinic
- Expanded and enhanced treatment and surgery areas for critical care patients
- Separate, quieter, and less stressful recovery rooms for shelter pets to heal after surgery
- On-demand access to x-rays, ultrasounds, and other diagnostic equipment as well as a specialized dental suite to provide even greater individualized care





As the pre-eminent local animal welfare resource,
we are where tens of thousands of Kitsap animal lovers increasingly go.

Our Vision for Kitsap Humane Society's Pet Lifesaving Campus



PLEASE

help us build on our demonstrated momentum and bring to life our vision of a comprehensive Pet Lifesaving Campus.

TOGETHER

we can create a more humane community for all and ensure a lasting legacy and impact for the tens of thousands of animals who will arrive at our shelter in the years ahead.

"Kitsap Humane Society is a long-standing partner of the ASPCA Northern Tier Shelter Initiative working to end pet homelessness and improve the health and welfare of dogs and cats in the community. The ASPCA is grateful to provide grant funding to support Kitsap Humane Society's efforts to better the lives of animals through pet adoption, behavior training, and access to veterinary care."



With the completion of the Pet Lifesaving Campus, Kitsap Humane Society will fulfill our vision of excellence in animal welfare. We've made great progress, but we need your help.

ALREADY COMPLETED

- Our **Pet Adoption Center**, (above) which opened in October 2019.
- Our **Canine Behavior & Training Center**, which opened in May 2020.

IN THE WORKS

- Our proposed **Veterinary Lifesaving Center** is scheduled to open in 2023.
- An expanded and improved **Large Animal Center** for temporary sheltering of farm animals in need.

TO COME

- An **Education & Training Center**, which enables KHS to offer humane education programs and dog training classes for the public.

Kay Joubert,
Director of ASPCA Northern Tier
Shelter Initiative Shelter Outreach